



Documentation folder

Number **TC11365-1**

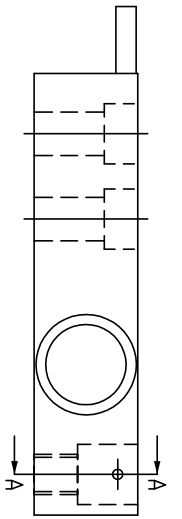
Project number 1902465

Page 1 of 1

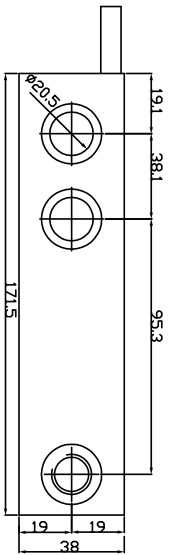
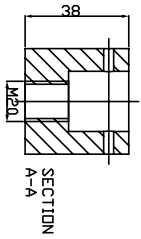
Number	Pages	Description	Remark
11365/0-01	1	Load cell outline	Mechanical
11365/0-02	1	Wiring schematic	Electrical



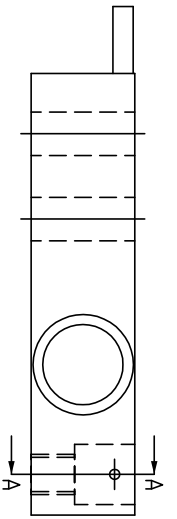
from 3000kg to 4500kg



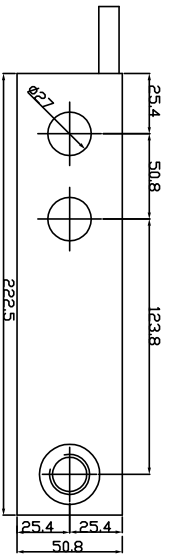
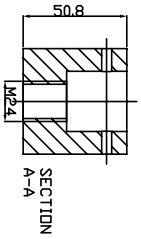
LOAD DIRECTION



10000kg



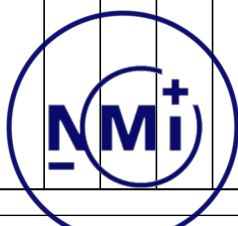
LOAD DIRECTION



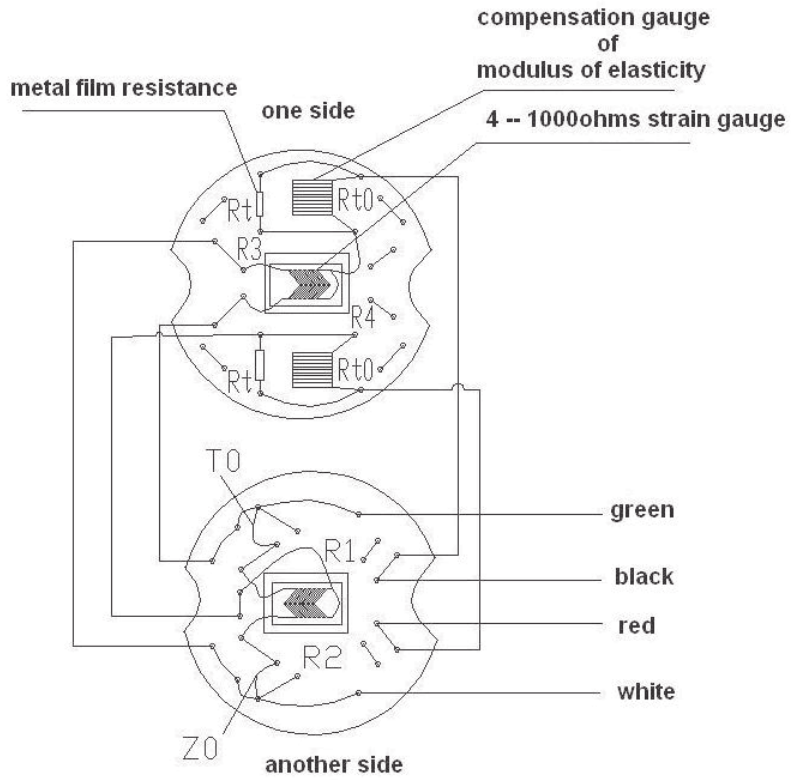
OMI ARREDO
Bilancia-Sistemi per pesare

DATA: 11/07/2018
DIS.N°: 708F227

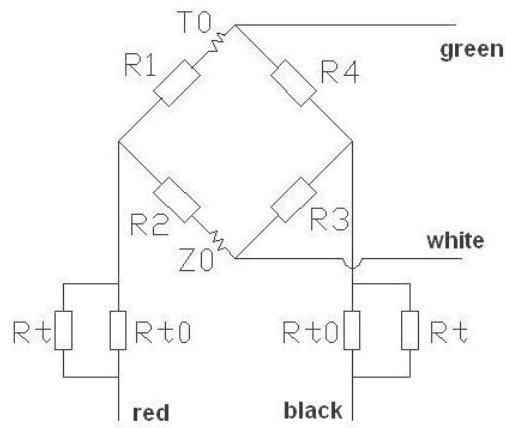
MECHANICAL CHARACTERISTICS	
TYPE	SHEAR BEAM
CAPACITY	4500, 10000 kg
PROTECTIVE	HERMETICALLY SEALED
CELL BODY MATERIAL	STAINLESS STEEL
HEAT TREATMENTS	HARDENING
ELECTRICAL CHARACTERISTICS	
MAXIMUM NUMBER OF VERIFICATION INTERVALS	nLC = 3000
STRAIN GAUGES	input 385Ω (or input 1100Ω)±20Ω output 350Ω (or output 1000Ω)±20Ω
RATED OUTPUT	2mV/V
MINIMUM LOAD CELL VERIFICATION INTERVAL	V _{min} =E _{Max} /10000
COMPENSATED TEMPERATURE RANGE	-10°C/+40°C
CABLE CHARACTERISTICS	
TYPE AND LENGHT	6-WIRE SCREENED UP TO 5m LONG
CABLE HOLDER	STANDARD



wiring plan



wiring schematic



Rev.	DATA	Scala	1/1	Dis.	L. T.	Designazione / Designation	
		Scale				wiring scheme	
		Approv.				-	
	MODIFICA	Data	13/06/06	Mat.	-	Toll. gen.	-
		Comm. Order no.	-			Numero	1306F1
		Codice Code	-				A4

