



# Documentation folder

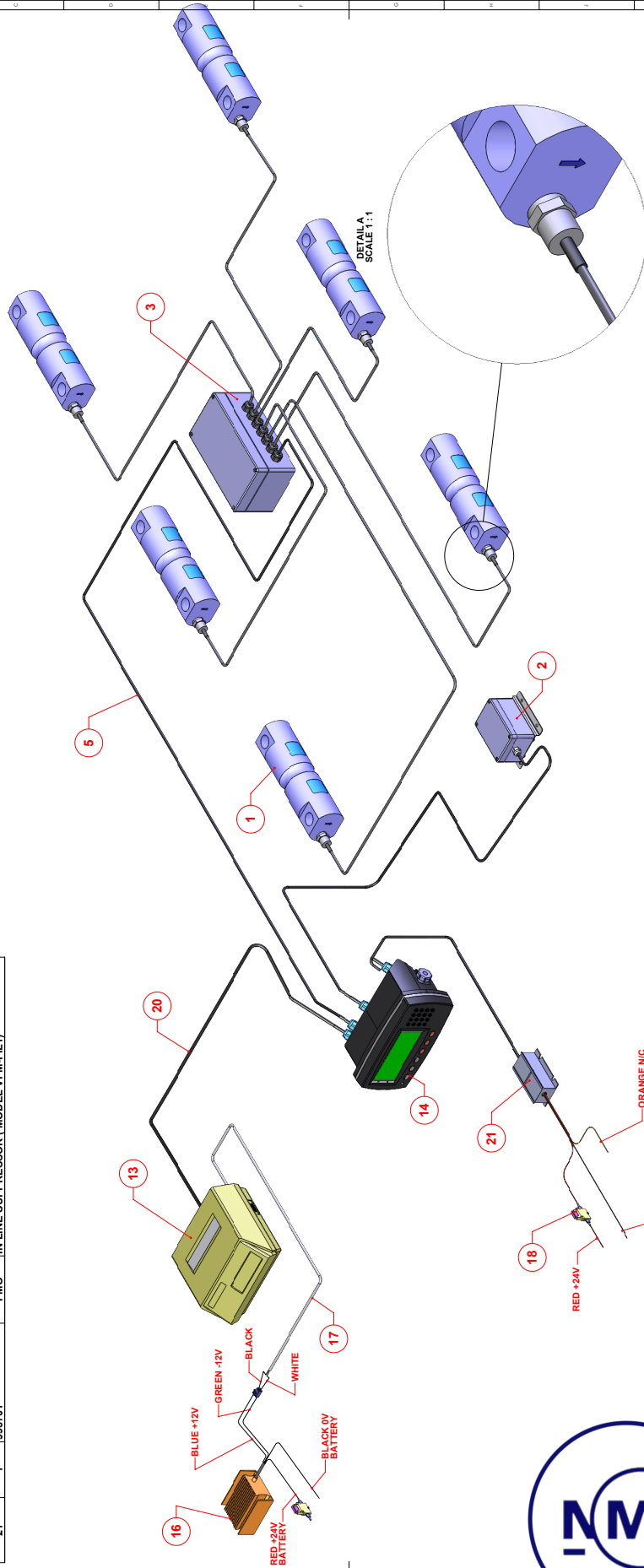
Number **T12113-2**  
Project number 3738063  
Page 1 of 1

Number	Pages	Description	Remark
12113/0-01	1	Hardware block diagram	-
12113/4-01	1	R4xx On Board Double Shear Beam	-
12113/0-02	1	Load cell assembly drawing	-
12113/4-02	1	R4xx On Board Double Shear Beam Load	-
12113/4-03	1	System Layout weighing frame	-



IF IN DOUBT ASK

ITEM NO.	QTY.	PART NO.	SUPPLIER	DESCRIPTION
1	6	235103	PMO	LFT DOUBLE SHEAR LOAD CELL
2	1	DRG-103621	PMO	PM1800 INCLINOMETER ASSY
3	1	343210	PMO	6 PORT JUNCTION BOX ASSY
5	1	499568	PMO	HEAVY DUTY STAR PRINTER
13	1	591000	PMO	PM1800 DISPLAY UNIT ASSY
14	1	DRG-103881	PMO	VOLTAGE CONVERTER
16	1	544309	PMO	STAR PRINTER POWER CABLE
17	1	591400	PMO	3A FUSE ASSY (100056 FUSE HOLDER 100031 FUSE)
18	2	100056	PMO	2 WAY TERMINAL BLOCK
19	1	DRG-103782	PMO	PRINTER COMMS CABLE
20	1	DRG-103782	PMO	IN LINE SUPPRESSOR (MODEL VPM-FIL1)
21	1	895701	PMO	

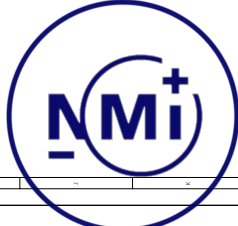


**NOTE ORIENTATION OF  
ARROW FOR MOUNTED  
LOAD CELL ON CHASSIS  
(ARROW MUST POINT TOWARDS  
WELDING BLOCK)**

PROJECT NAME:		<b>PM1800</b>	
DATE:	TITLE:	<b>PM1800 SYSTEM SCHEMATIC</b>	
11.03.09.		LFT1500 6 CELL SYSTEM	
DRAWN:	SCALE:	DRAWING / PART No.	
G.C.	1:3	<b>DRG-104124</b>	
MATERIAL:	ALL DIMS IN MM UNLESS STATED		REV. A1
TOLERANCES		THIRD ANGLE PROJ.	
NO DEC. PLCS ± 0.25mm ONE DEC. PLC ± 0.10mm TWO DEC. PLC ± 0.05mm ANGLES ± 2 DEG.			
SURFACE FINISH UNLESS OTHERWISE STATED			

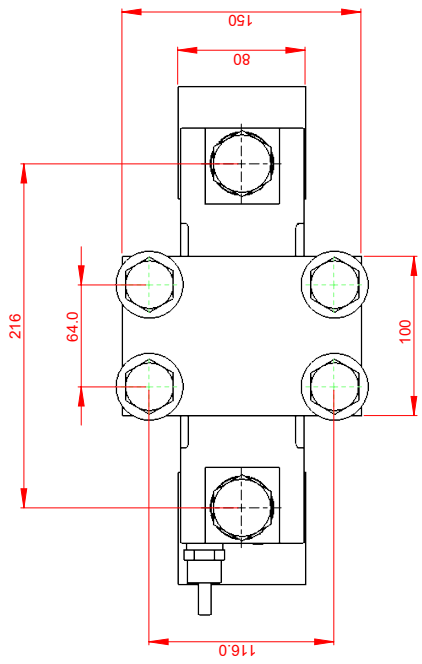
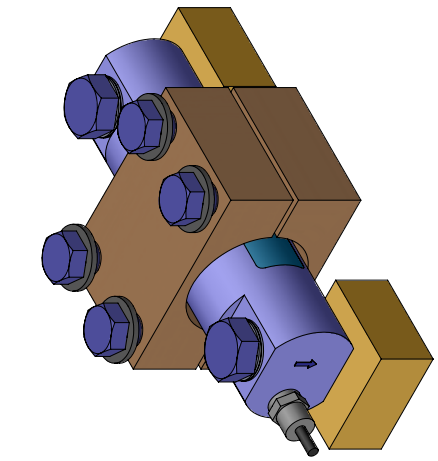
THIS DRAWING/SPECIFICATION IS THE PROPERTY OF P.M. ON BOARD LIMITED. BY COPYRIGHT IT MUST NOT BE LOANED, REPRODUCED, COPIED, EITHER WHOLLY OR IN PART, TO A THIRD PARTY WITHOUT THE WRITTEN PERMISSION OF P.M. ON BOARD LIMITED. ANY UNAUTHORIZED USE OF THIS DRAWING/SPECIFICATION FOR ANY PURPOSE DETRIMENTAL TO THE INTERESTS OF P.M. ON BOARD LIMITED WITHOUT THEIR WRITTEN PERMISSION IS PROHIBITED.

VISIONARY ENGINEERING LTD (01273) 781177  
AIREDALE HOUSE (01273) 781178  
BRADFORD  
BD7 1AG

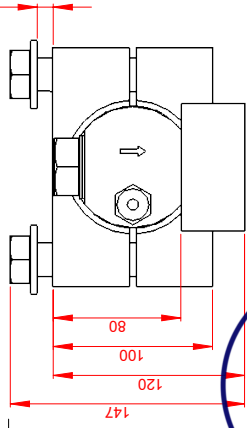
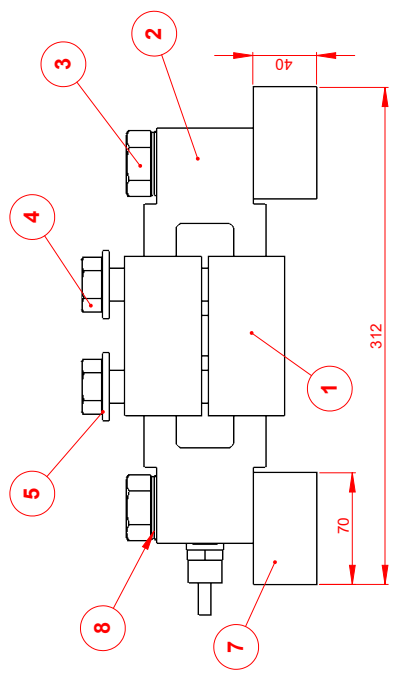




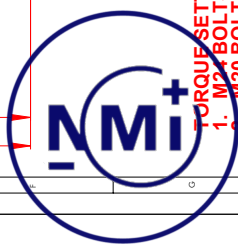
IF IN DOUBT ASK



10 MINIMUM THICKNESS FOR MOUNTING PLATE



ITEM	QTY.	PART NO.	DESCRIPTION
1	1	DRG-101193	LOAD CELL CLAMPING BLOCKS
2	1	235103	LFT DOUBLE SHEAR LOAD CELL
3	2	100123	LOAD CELL MOUNTING BOLTS M24 x 2P x 90 GRADE 10.9
4	4	100122	HEX. HEAD BOLT GRADE 10.9 - M20 x 1.5P x 110
5	4	331359	M20 PLATED WASHER
7	2	DRG-101374	M24 x 2P SCREW-CUT WELDING BLOCK
8	2	331330	1" I/D NORDLOC WASHER



**TORQUE SETTINGS:**  
 1: M24 BOLTS = 850Nm  
 2: M20 BOLTS = 550Nm

**NOTE: THESE VALUES ARE FOR LIGHTLY LUBRICATED BOLTS**

**PROJECT NAME** LFT1500 Underbody System

**TITLE:** LFT1500 RIGID MOUNTING ASSEMBLY WITH WELDING BLOCKS

**DATE:** 22.12.05

**SCALE:** 1:2

**NO. OFF:** AAE

**DRAWN:** AAE

**MATERIAL:**

**UNLESS STATED:**

**ALL DIMS IN MM:**

**DRAWING / PART NO.:** DRG-101195

**REV.:** A2

**THIRD ANGLE PROJ.**

**TOLERANCES**

NO DEC. PLCS ± 0.25mm  
 ONE DEC. PLCS ± 0.10mm  
 TWO DEC. PLCS ± 0.05mm  
 ANGLES ± 2 DEG.

**3.2**

**SURFACE FINISH**  
 UNLESS OTHERWISE STATED

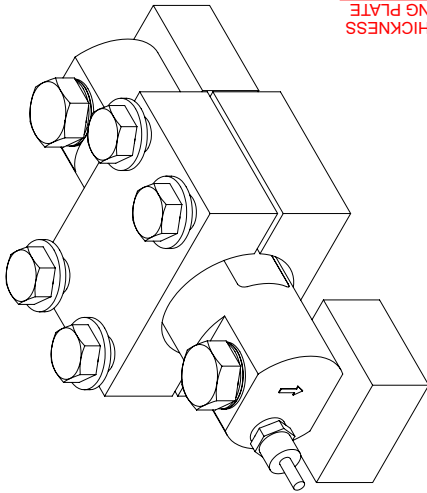
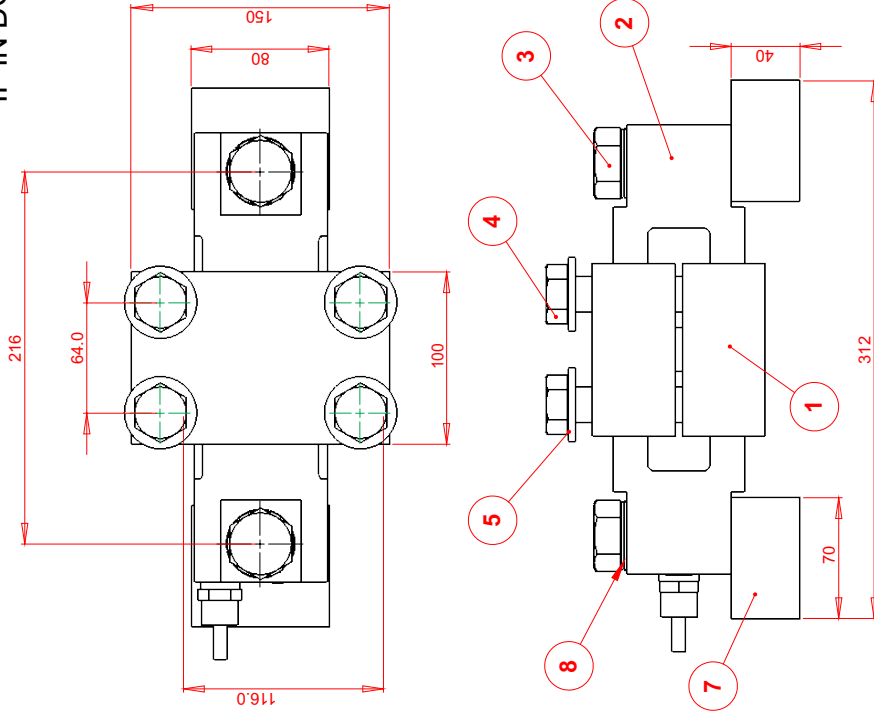
THIS DRAWING SPECIFICATION IS THE PROPERTY OF P&I ON BOARD LIMITED. BY COPYRIGHT IT MUST NOT BE LOANED, REPRODUCED, COPIED, EITHER WHOLLY OR IN PART, OR IN ANY MANNER, WITHOUT THE WRITTEN PERMISSION OF P&I ON BOARD LIMITED. FOR QUOTE UNQUOTE PURPOSES ONLY. TO THE INTENTS OF THIS AGREEMENT, THE INTENTS OF THIS AGREEMENT SHALL BE WITHOUT THEIR WRITTEN PERMISSION.

**On Board**

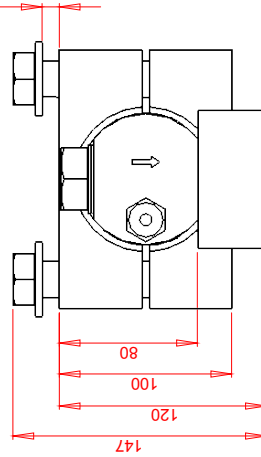
P&I ON BOARD LTD  
 CANAL ROAD  
 BEDFORD  
 TEL: 01297 711774  
 FAX: 01297 711776



IF IN DOUBT, ASK



10 MINIMUM THICKNESS FOR MOUNTING PLATE

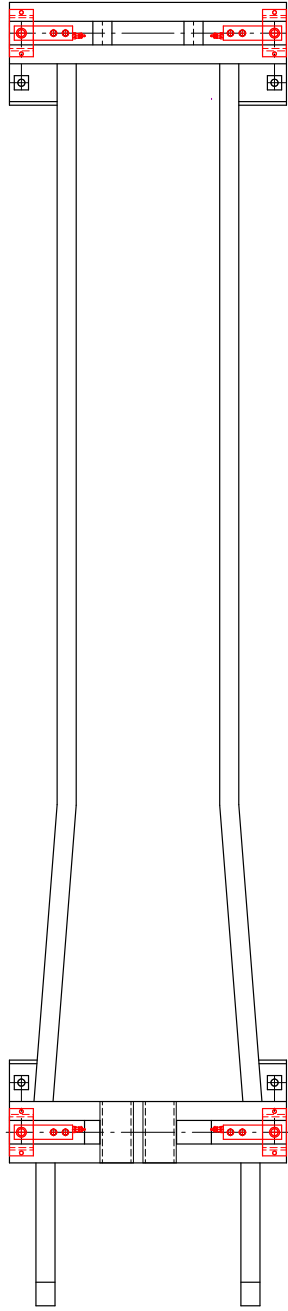


<b>rinstrum</b> <small>smart vibration solutions</small> RINSTRUM PTY LTD. 41 SUCCESS STACACIA RIDGE, QUEENSLAND 4110 AUSTRALIA. TEL: +61 7 32167166 FAX: +61 7 32168211 design@rinstrum.com	Rev 1.00 Initial release	DESCRIPTION Initial release	DATE DRN 11/12/28 MT	DRAWING TITLE <b>R4xx On-Board                  Double Shear Beam Load                  Introduction</b>	DRAWN MT
	SIZE A3 SCALE Not to scale	Moulding Draft Convention 	Material See Notes Colour Natural Finish Clean	Tolerances unless otherwise stated 0 = ±0.25MM 0.0 = ±0.10MM 0.00 = ±0.05MM All Dimensions in Millimetres U.O.S.	REVISION SHEET <b>CS01-248 - 1.00</b> 1 of 1

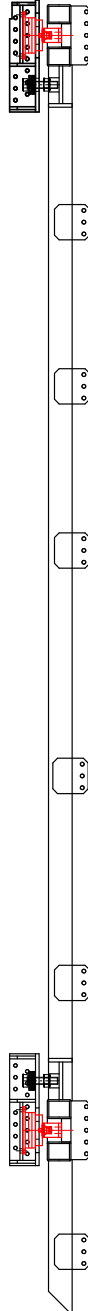
**Torque Settings:**  
 1. M24 Bolts = 850Nm  
 2. M20 Bolts = 550Nm  
 Note: These values are for lightly lubricated bolts.

ITEM	QTY	PART NO.	DESCRIPTION
1	1	DRG-101193	LOAD CELL CLAMPING BLOCKS
2	1	235103	DOUBLE SHEAR LOAD CELL
3	2	100123	LOAD CELL MOUNTING BOLTS M24 x 2P x 90 GRADE 10.9
4	4	100122	HEX. HEAD BOLT GRADE 10.9 - M20 x 1.5P x 110
5	4	331959	M20 PLATED WASHER
7	2	DRG-101374	M24 x 2P SCREW-CUT WELDING BLOCK
8	2	331330	1" I/D NORDLOC WASHER

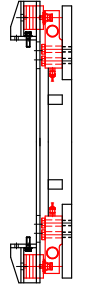
IF IN DOUBT, ASK



TOP VIEW



SIDE VIEW



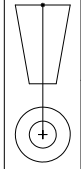
REAR VIEW



RINSTRUM PTY LTD.  
41 SUCCESS ST, ACACIA RIDGE,  
QUEENSLAND 4110, AUSTRALIA.  
TEL: +61 7 32167166 FAX: +61 7 32168211  
design@rinstrum.com

DATE DWN 11/12/28 MT

Rev 1.00 Initial release



MOULDING DRAFT CONVENTION

(R.#) = TOP OF DRAFT  
(T.#) = BASE OF DRAFT

SIZE A3 SCALE 1:1

Rinstrum copyright 2009. All rights reserved. Within this drawing and associated computer files is the property of Rinstrum Pty Ltd. Any reproduction or disclosure to 3rd party without the written permission of Rinstrum Pty Ltd is prohibited.

Material See Notes  
Colour Natural  
Finish Clean

Tolerances unless otherwise stated  
0 = ±0.5MM  
0.0 = ±0.25MM  
0.00 = ±0.1MM

All Dimensions in Millimetres U.O.S.

DRAWING TITLE  
System Layout  
Weighing Frame

DRAWN MT  
CHECKED APRV.

DRAWING NUMBER CS01-249 - 1.00  
REVISION SHEET 1 of 1

DO NOT SCALE FROM DRAWING

Note:  
• Load cells with elastomeric rubber is shown in red.

