

EU-TYPE EXAMINATION CERTIFICATE

Yantai Dongfang Wisdom Electric Co., Ltd.
No.6, Jindu Road, Laishan
264003, Yantai, Shandong
China

EU-Type Examination

Certificate No.

1628-24

Revision 0



Type H570
Object Electronic three-phase four-wire energy meter.
Direct connected

The object has been assessed and meets the requirements of

EU Directive 2014/32/EU
Module B

a CESI brand

The energy meter(s) meet(s) the essential requirements of Annex V of EU Directive 2014/32/EU, on the harmonization of the laws of Member States relating to the making available on the market of measuring instruments (recast).

This Certification is based on the report(s) listed in the report list in this Certificate.

This Certificate is valid until: September 20, 2034.

This Certificate comprises 8 pages in total.

Issued by KEMA B.V.
Klingelbeekseweg 195,
Arnhem, The Netherlands
Notified Body 2290

Alessandro Bertani
Director,
Services & Smart Technologies

Arnhem, September 20, 2024



REVISION OVERVIEW

The edition with the highest revision number always replaces the earlier issued editions.

Rev. No.	Date of issue	Reason
0	September 20, 2024	First issue

REPORT LIST

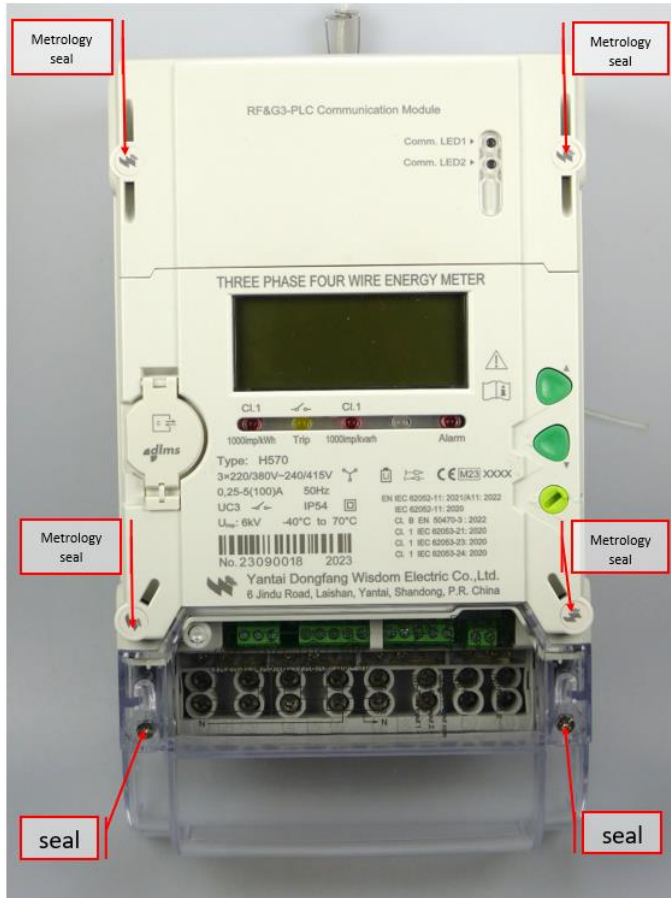
This Certificate is issued based on the following reports.

Report number	Revision	Firmware version
1629-24	0	6559
1630-24	0	
1631-24	0	

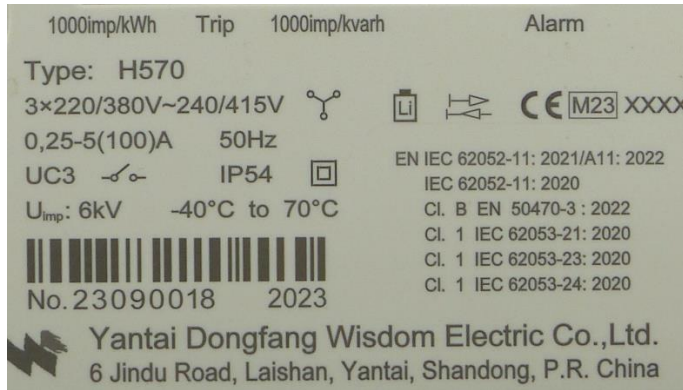
1 TECHNICAL DATA

Manufacturer	Yantai Dongfang Wisdom Electric Co., Ltd. No.6, Jindu Road, Laishan 264003, Yantai, Shandong China
Production location	Yantai Dongfang Wisdom Electric Co., Ltd. No.6, Jindu Road, Laishan 264003, Yantai, Shandong China
Type	H570
Connection	Direct
Type of circuit	3P4W
Accuracy class Wh	1/B
Accuracy class varh	1 and 2
Meter constant	1000 imp/kWh 1000 imp/kvarh
V range	220/380 – 240/415 V
I range I_{min} - I_n (I_{max})	0,25-5(100)A
Frequency	50 Hz
Temperature range	-40 .. 70 °C
Use	Outdoor
IP rating	IP54 (category 2)
Protection Class	II
Impulse voltage	6 kV
Internal clock	Crystal controlled
Environmental class	M1, M2, E1 and E2, CISPR32 class B
Utilisation category	UC3
LR Firmware ID	6559
LR Firmware CRC	F8d4
Register	LCD
Registry method(s):	Absolute computation method

2 PHOTOGRAPHS AND SEALING



3 EXAMPLES OF NAME PLATES



4 CALCULATION OF THE COMPOSITE ERROR / MPE

During the type approval test the intrinsic errors for temperature, voltage and frequency variation are determined per load point. The composite error is determined with the following formula:

$$\varepsilon_m = \sqrt{\varepsilon^2(I, \cos\varphi) + \delta^2(T, I, \cos\varphi) + \delta^2(U, I, \cos\varphi) + \delta^2(f, I, \cos\varphi)}$$

Where

$\varepsilon^2(I, \cos\varphi)$ = Intrinsic error of the meter at a certain load

$\delta^2(T, I, \cos\varphi)$ = Additional error due to the variation of the temperature at the same load

$\delta^2(U, I, \cos\varphi)$ = Additional error due to the variation of the voltage at the same load

$\delta^2(f, I, \cos\varphi)$ = Additional error due to the variation of the frequency at the same load

Results are in the table below:

			Composite error							
Current	cosφ	Phase	-40°C	-25°C	-10°C	5°C	30°C	40°C	55°C	70°C
I _{min}	1	3ph	0,04%	0,04%	0,02%	0,02%	0,02%	0,03%	0,02%	0,02%
I _{tr}	1	3ph	0,05%	0,04%	0,01%	0,00%	0,01%	0,00%	0,00%	0,00%
I _{tr}	1	1ph,1	0,04%	0,03%	0,01%	0,01%	0,01%	0,01%	0,01%	0,01%
I _{tr}	1	1ph,2	0,07%	0,06%	0,01%	0,01%	0,01%	0,01%	0,01%	0,01%
I _{tr}	1	1ph,3	0,05%	0,03%	0,02%	0,02%	0,02%	0,02%	0,02%	0,03%
I _{tr}	0,5i	3ph	0,12%	0,11%	0,11%	0,11%	0,11%	0,11%	0,11%	0,12%
I _{tr}	0,5i	1ph,1	0,09%	0,09%	0,10%	0,09%	0,09%	0,09%	0,09%	0,09%
I _{tr}	0,5i	1ph,2	0,10%	0,10%	0,08%	0,08%	0,08%	0,08%	0,08%	0,09%
I _{tr}	0,5i	1ph,3	0,14%	0,14%	0,14%	0,14%	0,14%	0,14%	0,14%	0,14%
I _{tr}	0,8c	3ph	0,07%	0,06%	0,04%	0,04%	0,04%	0,04%	0,04%	0,04%
I _n	1	3ph	0,06%	0,04%	0,02%	0,02%	0,01%	0,02%	0,02%	0,02%
I _n	1	1ph,1	0,06%	0,04%	0,01%	0,01%	0,01%	0,01%	0,02%	0,02%
I _n	1	1ph,2	0,07%	0,05%	0,01%	0,01%	0,00%	0,00%	0,00%	0,00%
I _n	1	1ph,3	0,04%	0,03%	0,01%	0,01%	0,01%	0,02%	0,02%	0,03%
I _n	0,5i	3ph	0,09%	0,08%	0,07%	0,07%	0,07%	0,07%	0,08%	0,08%
I _n	0,5i	1ph,1	0,09%	0,08%	0,07%	0,07%	0,07%	0,07%	0,08%	0,08%
I _n	0,5i	1ph,2	0,09%	0,09%	0,06%	0,06%	0,06%	0,06%	0,06%	0,07%
I _n	0,5i	1ph,3	0,08%	0,08%	0,08%	0,08%	0,08%	0,08%	0,09%	0,09%
I _n	0,8c	3ph	0,08%	0,06%	0,05%	0,05%	0,04%	0,04%	0,05%	0,05%
I _{max}	1	3ph	0,07%	0,06%	0,02%	0,02%	0,02%	0,02%	0,03%	0,03%
I _{max}	1	1ph,1	0,07%	0,06%	0,03%	0,03%	0,03%	0,03%	0,04%	0,04%
I _{max}	1	1ph,2	0,06%	0,06%	0,03%	0,02%	0,01%	0,01%	0,02%	0,01%
I _{max}	1	1ph,3	0,04%	0,04%	0,03%	0,03%	0,03%	0,03%	0,04%	0,05%
I _{max}	0,5i	3ph	0,03%	0,08%	0,03%	0,05%	0,02%	0,03%	0,07%	0,11%
I _{max}	0,5i	1ph,1	0,04%	0,02%	0,03%	0,07%	0,08%	0,05%	0,13%	0,11%
I _{max}	0,5i	1ph,2	0,05%	0,04%	0,03%	0,03%	0,03%	0,03%	0,03%	0,04%
I _{max}	0,5i	1ph,3	0,06%	0,06%	0,06%	0,06%	0,06%	0,06%	0,08%	0,09%
I _{max}	0,8c	3ph	0,05%	0,03%	0,03%	0,03%	0,03%	0,02%	0,03%	0,06%

Requirements

I _{min}	1	3ph	4,00%	3,50%	2,50%	2,00%	2,00%	2,50%	3,50%	4,00%
>I _{min}	Any	3ph	4,00%	3,50%	2,50%	2,00%	2,00%	2,50%	3,50%	4,00%
>I _{min}	Any	1ph	4,50%	4,00%	3,00%	2,50%	2,50%	3,00%	4,00%	4,50%

5 OPTIONS AND VARIANTS

Overview of variants with details

Type designation	Details of the meter
	<ul style="list-style-type: none">• Communication options: optical port RS485 (2x) RF&G3-PLC• Pulse output (active, reactive, clock)• Pulse input (2x)• External relay output• Buttons

END OF DOCUMENT

The laboratories of KEMA Labs are:

- CESI S.p.A., Milan, Italy, accredited by ACCREDIA in accordance with ISO/IEC 17025:2017 under no. 0030L.
- FGH Engineering & Test GmbH, Mannheim, Germany, accredited by DAkKS in accordance with DIN EN ISO/IEC 17025:2018 under no. D-PL-12110-01-00.
- IPH Institut "Prüffeld für elektrische Hochleistungstechnik" GmbH, Berlin, Germany accredited by DAkKS in accordance with DIN EN ISO/IEC 17025: 2018 under nos. D-PL-12107-01-00 and D-K-12107-01-00.
- KEMA B.V., Arnhem, The Netherlands, accredited by RvA in accordance with EN ISO/IEC 17025:2017 under nos. L020, L218 and K006.
- KEMA Labs, Zkušebnictví, a.s., Prague, the Czech Republic, testing laboratory no. 1035 accredited by CAI in accordance with ČSN EN ISO/IEC 17025:2018.
- KEMA-Powertest, LLC, Chalfont, United States, accredited by A2LA in accordance with ISO/IEC 17025:2017 under no. 0553.01.

Tests are carried out under the scope of accreditation, unless otherwise indicated in the chapter 'Tests carried out'.