

EU-TYPE EXAMINATION CERTIFICATE

Shenzhen Londian Wason Holdings Group Co., Ltd.
Build 107, 1st Nanyou Industrial Zone, Nanshan District
518054, Shenzhen
China

EU-Type Examination

Certificate No.

1548-24

Revision 0



Type LD103
Object Electronic single-phase two-wire two-element energy meter.
Direct connected

The object has been assessed and meets the requirements of

EU Directive 2014/32/EU,
Module B

The energy meter(s) meet(s) the essential requirements of Annex V of EU Directive 2014/32/EU, on the harmonization of the laws of Member States relating to the making available on the market of measuring instruments (recast).

This Certification is based on the report(s) listed in the report list in this Certificate.

This Certificate is valid until: March 6, 2034.

This Certificate comprises 10 pages in total.

Issued by KEMA B.V.
Klingelbeekseweg 195,
Arnhem, The Netherlands
Notified Body 2290

Alessandro Bertani
Director,
Services & Smart Technologies

Arnhem, March 6, 2024



REVISION OVERVIEW

The highest revision always replaces the earlier issued versions.

Rev. No.	Date of issue	Reason
0	March 6, 2024	First issue

REPORT LIST

This Certificate is issued based on the following reports.

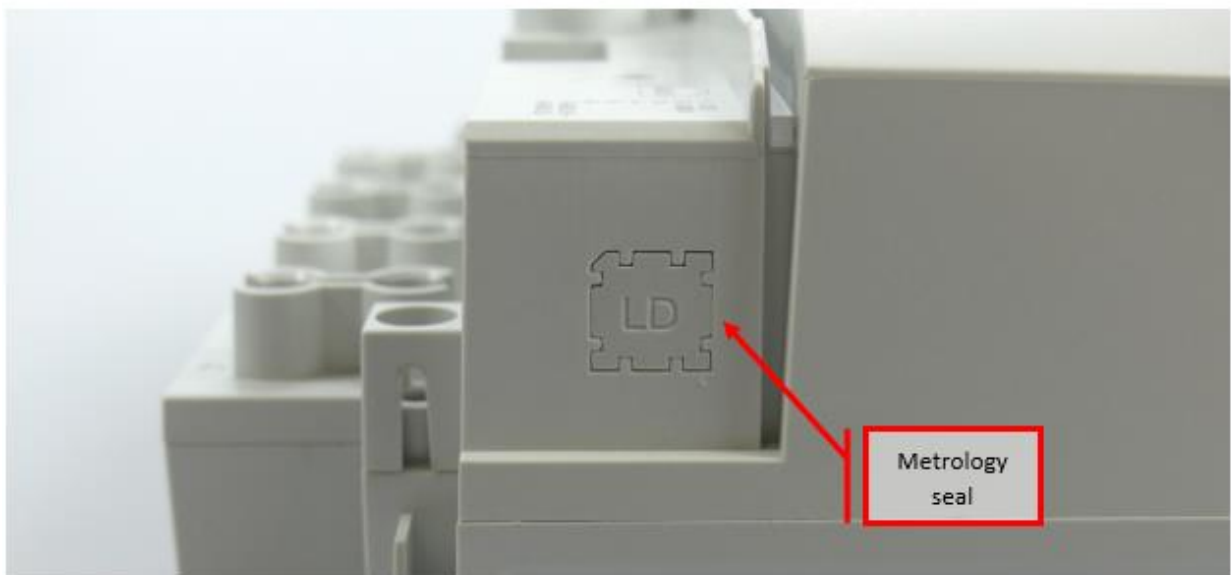
Report number	revision	Firmware version
1525-24	R1	V01.01

1 TECHNICAL DATA

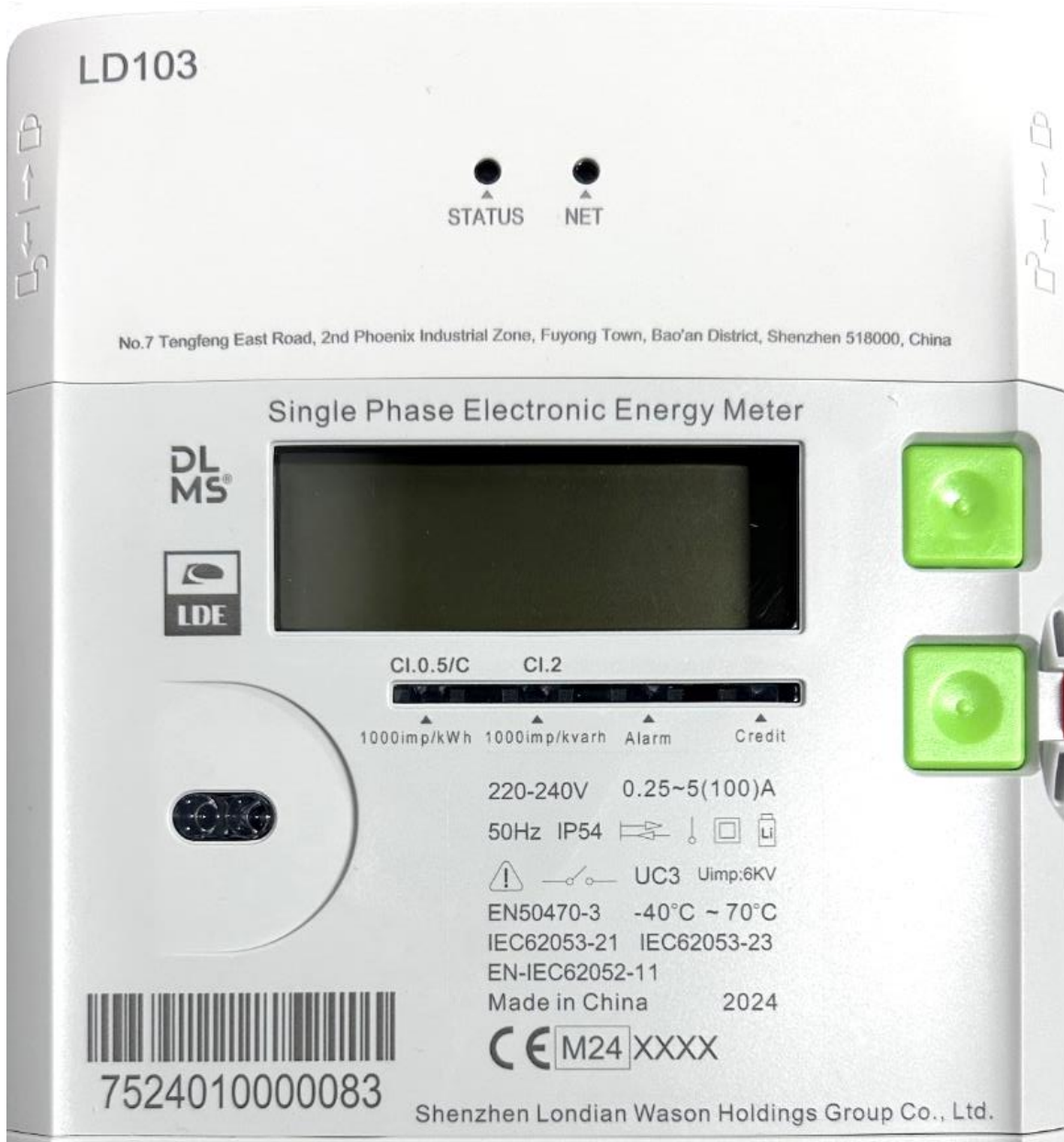
Manufacturer	Shenzhen Londian Wason Holdings Group Co., Ltd. Build 107, 1st Nanyou Industrial Zone, Nanshan District 518054, Shenzhen China		
Production location	Shenzhen Londian Wason Holdings Group Co., Ltd. No.7 Tengfeng East Road, 2nd Phoenix Industrial Zone, Fuyong Town, Bao'an District, 518000, Shenzhen China		
Type	LD103		
Model	-		
Connection	Direct		
Type of circuit	1P2W		
Accuracy class Wh	C		
Accuracy class varh	2		
Meter constant	1000 imp/kWh 1000 imp/kvarh		
V range	220 - 240 V		
I range $I_{min}-I_n(I_{max})$	0,25-5(100)A		
Frequency	50 Hz		
Temperature range	-40 .. 70 °C		
Use	Indoor		
IP rating	IP54		
Protection Class	II		
Impulse voltage	6 kV		
Internal clock	Crystal controlled		
Environmental class	M1, M2, E1 and E2, CISPR32 class B		
Utilisation category	UC3		
LR Firmware ID	V01.01		
LR Firmware CRC	8FBf68A8		
Register	LCD		
Registry method(s):	bi-directional method with separate registers: received- and delivered energy is added in separate registers.		

2 PHOTOGRAPHS AND SEALING





3 EXAMPLES OF NAME PLATES





4 CALCULATION OF THE COMPOSITE ERROR / MPE

During the type approval test the intrinsic errors for temperature, voltage and frequency variation are determined per load point. The composite error is determined with the following formula:

$$\varepsilon_m = \sqrt{\varepsilon^2(I, \cos\varphi) + \delta^2(T, I, \cos\varphi) + \delta^2(U, I, \cos\varphi) + \delta^2(f, I, \cos\varphi)}$$

Where

$\varepsilon^2(I, \cos\varphi)$ = Intrinsic error of the meter at a certain load

$\delta^2(T, I, \cos\varphi)$ = Additional error due to the variation of the temperature at the same load

$\delta^2(U, I, \cos\varphi)$ = Additional error due to the variation of the voltage at the same load

$\delta^2(f, I, \cos\varphi)$ = Additional error due to the variation of the frequency at the same load

Results are in the table below:

Current	cosφ	-40°C	-25°C	-10°C	5°C	30°C	40°C	55°C	70°C
I _{min}	1	0,29%	0,19%	0,13%	0,12%	0,12%	0,12%	0,14%	0,18%
I _{tr}	1	0,14%	0,08%	0,05%	0,05%	0,05%	0,05%	0,06%	0,11%
I _{tr}	0,5i	0,34%	0,23%	0,14%	0,11%	0,11%	0,11%	0,11%	0,12%
I _{tr}	0,8c	0,11%	0,06%	0,06%	0,06%	0,06%	0,06%	0,08%	0,13%
I _n	1	0,10%	0,03%	0,01%	0,01%	0,01%	0,02%	0,05%	0,09%
I _n	0,5i	0,26%	0,15%	0,09%	0,06%	0,05%	0,05%	0,05%	0,06%
I _n	0,8c	0,03%	0,01%	0,01%	0,01%	0,01%	0,02%	0,06%	0,11%
I _{max}	1	0,27%	0,15%	0,09%	0,05%	0,04%	0,04%	0,04%	0,04%
I _{max}	0,5i	0,52%	0,32%	0,20%	0,10%	0,06%	0,07%	0,09%	0,10%
I _{max}	0,8c	0,38%	0,24%	0,17%	0,13%	0,11%	0,11%	0,11%	0,11%
Requirements									
Any	1	2,00%	1,70%	1,30%	1,00%	1,00%	1,30%	1,70%	2,00%
Any	0,5/0,8	2,00%	1,30%	1,00%	0,70%	0,70%	1,00%	1,30%	2,00%

5 OPTIONS AND VARIANTS

Overview of variants with details

Type designation	Details of the meter
LD103	<ul style="list-style-type: none">• Communication options:<ul style="list-style-type: none">optical portRS4854GG3-PLC5M-Bus• Pulse output• Supply control switch• Neutral Measurement• Key path

END OF DOCUMENT

The laboratories of KEMA Labs are:

- CESI S.p.A., Milan, Italy, accredited by ACCREDIA in accordance with ISO/IEC 17025:2017 under no. 0030L.
- FGH Engineering & Test GmbH, Mannheim, Germany, accredited by DAkKS in accordance with DIN EN ISO/IEC 17025:2018 under no. D-PL-12110-01-00.
- IPH Institut "Prüffeld für elektrische Hochleistungstechnik" GmbH, Berlin, Germany accredited by DAkKS in accordance with DIN EN ISO/IEC 17025: 2018 under nos. D-PL-12107-01-00 and D-K-12107-01-00.
- KEMA B.V., Arnhem, The Netherlands, accredited by RvA in accordance with EN ISO/IEC 17025:2017 under nos. L020, L218 and K006.
- KEMA Labs, Zkušebnictví, a.s., Prague, the Czech Republic, testing laboratory no. 1035 accredited by CAI in accordance with ČSN EN ISO/IEC 17025:2018.
- KEMA-Powertest, LLC, Chalfont, United States, accredited by A2LA in accordance with ISO/IEC 17025:2017 under no. 0553.01.

Tests are carried out under the scope of accreditation, unless otherwise indicated in the chapter 'Tests carried out'.